



# Home at St. E's

Vol. 34 No. 01

Summer 2023

## Peace at Last

After years of domestic violence and abuse – physical, mental and substance – Rebecca Garcia had had enough. Last spring, the 42-year-old mother of eight picked up Amor and Juanito, her two remaining children still living at home in Watrous, New Mexico, and headed to Glorieta where a special shelter had been set up last year due to the fires raging in Northern New Mexico.

When that shelter shut down after the fire danger was over, the family moved to Consuelo's Place, the city-run shelter on the old College of Santa Fe campus. There Dahlia Christen, their case worker, told them of St. Elizabeth's Sonrisa Family Transitional Housing Program and called Neal Windham, the program manager, to begin the admission process. In October, they moved into their new apartment.

"My mom's been going through trials and hardships about everything in life," says 17-year-old Amor. "We've been from place to place and had no support from family, so we've basically had to get up on our own. You've always got to climb a mountain to get to a bigger one and you just have to keep moving forward."

Once at Sonrisa, Neal found furniture for their apartment, waived some rent so they could buy a car, connected the two children with Santa Fe Public Schools Adelante program for assistance, and hired Rebecca to clean some apartments so the family would have spending money.

"We arrived with only five bags to our name, no money, no jobs,



Neal Windham, Sonrisa program manager, with new residents Amor and Rebecca Garcia.

no anything," Amor says. "Neal has helped us with so much. Anything we need to ask, he's always there."

Neal concurs that all three seemed shell-shocked and hesitant from past experiences when they arrived.

"They showed up with nothing to their name," he says, "and wouldn't say or ask for anything. So I took them to WalMart, got a cart and starting filling it up using the \$100 gift card that they had gotten at the Thornburg Christmas party. You should have seen their eyes getting bigger and bigger."

Now the future is starting to look bright. Rebecca has ongoing income from SSDI, Juanito's happy in school, and Amor has a job at Burlington Coat Factory and will graduate next year from Capital High.

"We're on a special journey, and our life has changed a lot," Rebecca says, "It's been an awesome challenge, but a big change for the better. I feel really safe where we're at."

Amor seconds this.

"We've seen it all," she says. "We've

had abuse in our lives, verbally, mentally and physically, and it's been like that since I was little. We've always had to move to different places, and I've had to become an adult at a young age.

"But thanks to this program, we've actually had some reassurance and stability in our lives. Now at night we don't hear yelling, things breaking, lights going on and off. We've come a long way and just want peace. And here at Sonrisa, we've actually found that."

## Inside

2 Director's Corner

3 Freshening Up

4 Hungry Mouth Coming

5 Our Wonderful Chefs



**MISSION**

St. Elizabeth is dedicated to assisting homeless individuals and families by providing emergency shelter, food, case management, counseling, supportive housing and referrals to partnering human-services agencies.

**BOARD OF DIRECTORS**

- Kathryn Ugoretz, President
- Dan Nickelson, Vice President
- Emily Smith, Secretary
- Marcel Legendre, Treasurer
- Toni Abeyta
- Joel Baca
- Sam Baca
- Sunil Sakhakar
- Ann Yalman
- Edward Archuleta, Ex-Officio

**ADMINISTRATIVE STAFF**

- Edward Archuleta, Executive Director
- Michael Bartlett, Business Manager
- James Podesta, Director of Development
- Mara Melton, Director of Operations
- Tang Dao, Data & Development Manager
- Calvin Fields, Special Events & Community Outreach
- Katie Rodriguez, Accountant
- Stephanie Lefebvre, SOAR Specialist
- Jennifer Buffaloe, Supportive Housing Manager
- Maria Vargas, Therapist

**MEN'S EMERGENCY SHELTER**

- Riyah Garcia, Program Manager
- Nick Svetnicka, Case Manager
- Raul Aboytas, Shift Supervisor
- Donovan Baca, Shift Supervisor
- Mireya Bouquin, Shift Supervisor
- Carrie Rodriguez, Shift Supervisor
- Ozell Brown, Overnight Supervisor
- Woodson Parker, Overnight Supervisor
- Jeremy Ladner, Intern

**CASA FAMILIA URGENT TRANSITION CENTER**

- Cara Latil, Program Manager
- Samantha Vigil, Case Manager
- Renee Creagh, Shift Supervisor
- Raimy Engel, Shift Supervisor
- Veronica Esparza, Shift Supervisor
- Sarah Gano, Shift Supervisor
- Esperanza Montoya, Shift Supervisor
- Heaven Tapia, Shift Supervisor
- Josefina Samaniego-Grado, Overnight Supervisor

**SONRISA FAMILY SUPPORTIVE LIVING PROGRAM**

- Neal Windham, Program & Case Manager

**CASA CERRILLOS SUPPORTIVE LIVING PROGRAM**

- Mara Melton, Program Manager
- Shelleta Harris, Case Manager
- Jerome Block, Peer Support Specialist
- Elena Salinas, Housekeeping
- Jeff Medina, Maintenance Supervisor

**SANTA FE SUITES**

- Ericka Kidd, Program/Case Manager
- Kyra Thomson, Program/Case Manager
- Shannon Milligan, Supportive Housing Navigator
- Tamlin Horne, Clinical Social Worker

St. Elizabeth Shelters & Supportive Housing  
 804 Alarid St. Santa Fe, NM 87505  
 505-982-6611 (office) | 505-982-5347 (fax)  
 www.steshelter.org

**Director's Corner**



**Edward Archuleta**

When you're reliant on charitable giving for a significant percentage of your annual income, every year is a challenge. Will our year-end giving raise enough funds to balance our budget? If not, will we have to cut staff and/or programs? How much debt can we incur and still keep our doors open, not to mention having to pay the borrowed funds back?

But no matter our financial state, the needs of our homeless clients go on. So how can we best guarantee an ongoing future for St. Elizabeth that can and will continue providing needed services for them?

One answer would be to try and place our annual giving on a more even keel. And one way to do this is to have a robust planned giving program wherein our special friends, those to whom St. Elizabeth holds a special place or significance, make provisions for us in their will or estate plans.

Some of our donors have already informed us of having done so on their own, ensuring that their giving will continue. Now we're looking for others to join them by creating a St. Elizabeth Legacy Circle. Besides knowing that you're helping to secure our future, as well as a better future for our homeless individuals and families, members will be invited to an annual event to personally meet staff and other donors while receiving updates on shelter activities and upcoming plans for improvements. No gift is too small to join!

We'll be sending out more information soon. Until then give me a call if you're interested in learning more.

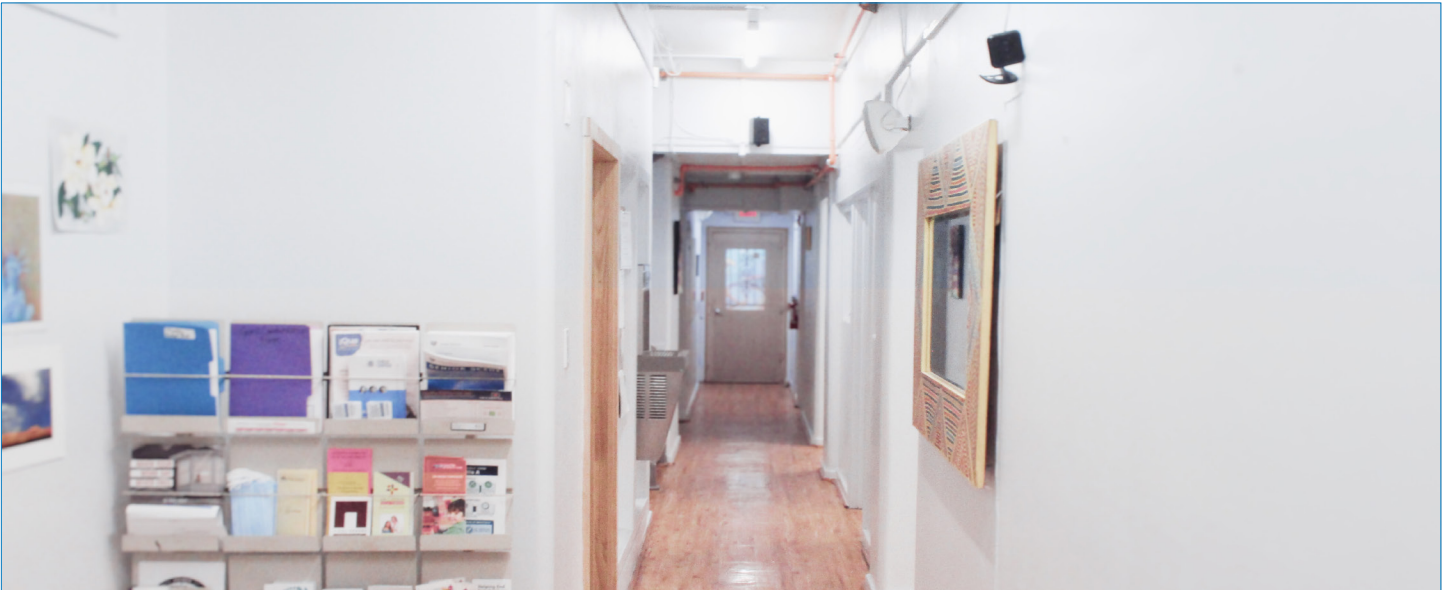
Executive Director



Edward planting a kiss on his fellow St. Michael's alum, Governor Michele Lujan Grisham, at the Santa Fe Pride Parade.



# Facility Upgrades Continue



The newly painted hallway at Casa Familia shows a clean, uniform and polished look.

**I**t's been a busy spring at Casa Familia. The entire interior has been repainted, an improved security and safety system installed, and new furniture bought for both the back patio and enclosed front outdoor courtyard.

The renovations are proving beneficial for both clients and staff.

"The building is now one uniform color," says Cara Latil, program manager. "We repainted over the old murals and odd mismatched

colors, making it brighter but also more calming for our residents. It looks cleaner now without looking like an institution."

The new security system has cameras strategically placed in all public areas inside the building that record visuals but without sound to make them HIPA compliant. Emergency fire-safety strobes that send off a sound warning accompanied by a flashing light are in every room to accommodate

blind or deaf clients.

Next is installing security lights outside the building in the parking area turned on and off by an inside switch instead of a motion detector so as not to disturb neighbors with their constant flashing.

"All these improvements are designed to enhance client and staff safety," Cara says.

Other future plans include extending evening curfew during the longer days of summer and adding private lockers for residents to store their non-controlled medications and other pharmaceuticals. While staff will continue to hold and monitor controlled prescriptions, this will free up their time from the daily dispensing of aspirin, cold, flu and other medications to clients.

"It's all to help our residents to become more self-sufficient and self-reliant," Cara says. "We want to create more self-autonomy and foster independence so when they leave they're better able to take care of themselves and their children and less likely to return."



Table and chairs at the outdoor patio, newly designated as a smoke-free area to better accommodate non-smoking residents.



SAVE THE DATE  
NOV. 11, 2023

JOIN US FOR OUR

11<sup>TH</sup> ANNUAL

HUNGRY MOUTH  
FESTIVAL



804 ALARID STREET, SANTA FE, NM 87505  
505 982-4611  
WWW.STESHELTER.ORG



St. Elizabeth's float with staff, residents and supporters in the Santa Fe Pride Parade.

## Thank You to Our Dedicated Chefs!

Elizabeth Alexander  
Amma Center  
The Arc  
Bethlehem Lutheran Church  
Joni Brenneisen  
Candlelight Neighborhood Association  
Lynn Cheek  
Christ Church Santa Fe  
Janie Cravens & Friends  
Desert Rain  
Jackie Dulle  
Elege  
Ernst  
Calvin Fields  
Karen Fine  
Vickie Gabin  
Randi & Brian Hughes  
Immaculate Heart of Mary  
Interfaith Cooking Group  
Elizabeth Johnson  
Cathy Kohlrust  
Naomi Kroencke  
Michaelene Kyrala  
Tom L  
La Familia Medical Center  
Deena Lentz  
Susan Little  
Living Our Faith  
Lutheran Church of the Servant  
Mirabai  
Larry Montoya  
Mormon Families of White Rock  
Order of the Secular Franciscans

Matthew Ortiz  
Rick Ortiz  
Over the Arroyo Hiking Group  
The Pantry  
Papa Murphy's/St. Francis Drive  
Susan Peterson  
Ron & Frances Porterfield  
Elizabeth Rice  
Pat Roach  
Dan Rusthoi & Friends  
Bud Ryan & Friends  
St. Bede's Episcopal Church  
St. John's Soup Kitchen  
Santa Fe School of Cooking  
Shelley  
Marcella Sierra  
Kristin & Kathy Slater-Huff  
Margie Stockton  
Mary Stramel  
Tapia Family  
Elizabeth Taylor  
Temple Beth Shalom  
Irene Thomas  
Kim Ulibarri  
Unitarian Church of Los Alamos  
United Church of Santa Fe  
Upaya Zen Center  
Sheila Vaughn  
Veterans of Foreign Wars Auxiliary  
Lisa Weremeling  
Westminster Presbyterian Church  
Karyl Yeston  
Zia United Methodist Church

**A R T**  
U N H O U S E D

Arts healing workshops  
creating unique art sold locally  
to support the artists and shelter.  
[steshelter.org/unhousedart](http://steshelter.org/unhousedart)

## THANK YOU DONORS

Please visit our website,  
[www.steshelter.org](http://www.steshelter.org),  
to view the list of our generous donors from  
December 1, 2022 – June 30, 2023.

## ROUNDUP APP

Make an impact with little effort.  
Donate your change to St. E's  
using the Roundup App. Visit  
your app store or go to

[www.steshelter.org](http://www.steshelter.org)



Non-Profit Org  
US Postage  
PAID  
Santa Fe, NM  
Permit No. 213

## Summer Wish List

### MEN'S EMERGENCY SHELTER

Please call (982-6611) or bring the smaller items to St. Elizabeth at 804 Alarid Street.

**Clothing:** Hats, rain ponchos, men's jackets, socks, underwear, backpacks.

**Personal Hygiene:** Shaving cream, disposable razors, toothbrushes, toothpaste, hotel-size shampoo, deodorant, sun screen.

**Food:** Shelf-stable single serving beverages, milk, juice, eggs, fresh fruits, bottled water, coffee.

**Other:** Blankets, bus passes.

**Volunteers:** Cooks for dinner.

### CASA FAMILIA

Please call (983-2042) or bring the smaller items to Casa Familia at 1604 Berry Ave.

**Clothing:** Women's new underwear, socks, long-sleeve shirts, shoes, rain gear, umbrellas, sun hats.

**Personal Hygiene:** Shampoo, conditioner, disposable razors, toothpaste, toothbrushes, hair brushes, foot powder, body soap, nail clippers, nail files, deodorant, sun screen, cough drops, cotton balls and Q-tips, Emergen Vitamin C®, face wash and moisturizer, body wash, allergy meds Zrytex and Claritan.

**Food:** Fresh fruits & vegetables, bottled water, coffee and creamer.

**Other:** Bus passes, movie passes, diapers (all sizes, particularly 4-6), baby wipes, twin size sheets, towels, latex-free gloves, kitchen utensils, pots & pans, dish soap, toilet paper, paper towels, shower shoes, AA/AAA/9-volt batteries, laundry detergent, painting supplies (roller covers, brushes tape), birdseed for feeders, sleeping bags and tents.

**Tools:** Hose wheel for outdoor hose, propane for barbeque.

**Volunteers:** Cooks for dinner

### CASA CERRILLO

Please call (471-3456) to discuss their current needs before bringing them to the facility at 381½ Cerrillos Road.

**Household Items:** Pots & pans, bedding, furniture, cleaning supplies, light bulbs.

### SANTA FE SUITES

Please bring to 3007 S. St. Francis Drive (behind Albertson's) but call first (505-494-4231) for furniture.

**Household Items:** Cleaning supplies, laundry detergent, pots/pans, crockpots, toaster ovens, silverware, cooking utensils, plates/bowls, full size sheets/blankets, towels, dish soap, dish towels.

**Other:** AA/AAA batteries, doggie bags, bus passes, hygiene products, board games.